



DARKFIGHTER ULTRA LOW-LIGHT CAMERAS

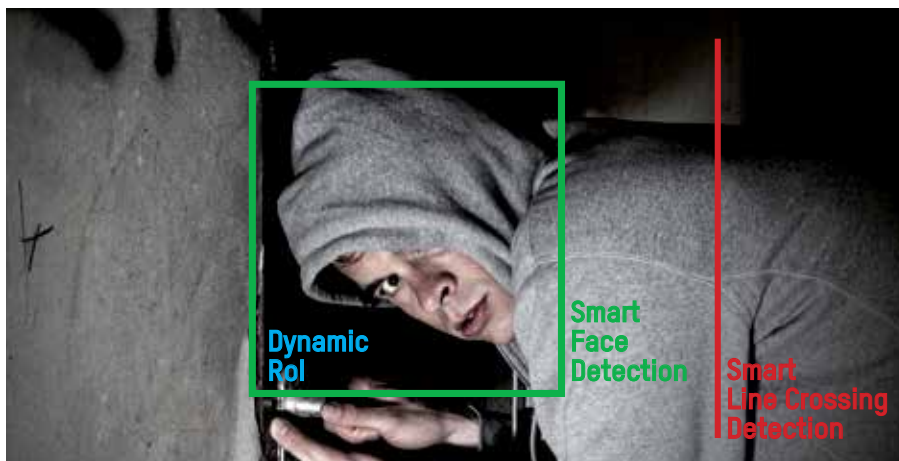
Advanced Smart features enable Hikvision's new IP Smart Darkfighter cameras to provide exceptionally sharp images even in low-light conditions, whether during the day or at night. Combining outstanding performance and wide range with convenience and ease of use, these sophisticated cameras are taking video surveillance to an entirely new level - the ideal security choice for warehouses, retail outlets, airports, and other sensitive sites.

DARKFIGHTER GIVES YOU ALL THE DETAILS EVEN IN THE DARK



Footages registered by conventional surveillance cameras in low-light conditions are often of little value due to the diminished quality, detail and colors of images. Darkfighter cameras are equipped with 1/2" CMOS progressive scan sensors enabling them to obtain high quality images with good color value in light levels as low as 0.002 lux, which the human eye perceives as total darkness. Darkfighter cameras are ideal for inconspicuous night time surveillance, their high sensitivity makes additional light sources unnecessary.

DARKFIGHTER IS SMART SURVEILLANCE FOR SUPERIOR SECURITY IN ANY SITUATION



Sometimes image quality isn't enough. Especially when it comes to special applications and security for high risk sites, surveillance cameras often require sophisticated analytical capabilities to ensure they discriminate threats accurately and work reliably in any kind of situation. Features like Smart Defog, Smart Face Detection, Smart Audio Detection, Smart Intrusion Detection, Smart Line Crossing Detection, Smart VQD and many more make Darkfighter cameras exceptionally intelligent and able to meet even the most challenging requirements.

DETAILED, HIGH-DEFINITION IMAGES DARKFIGHTER DELIVERS 2 MP FULL HD RESOLUTION



No other camera can match Darkfighter's combination of advanced analytical capabilities, superior performance in challenging conditions, and Megapixel HD resolution (1920X1080 at 50fps). And that's not all. Darkfighter cameras also feature the Smart Dynamic Rol (Region of Interest) Codec, which focuses encoding on a predefined area. Since they save the highest resolution images for the details that really matter, Darkfighter cameras are able to make the most out of two Megapixels. Combined these features add up to a camera that has set a new benchmark for professional video surveillance technology.

SMART FEATURES

The Smart features improve the efficiency and reduces the reaction time per incident. Gives the user the opportunity to monitor, detect and filter events.



SMART LINE CROSSING DETECTION

The camera triggers an alarm as soon as one or more fixed lines are crossed in either direction, and local recording of events can be set off if desired.



SMART AUDIO DETECTION

This feature can filter out background noise and analyze ambient noise to detect the source of unusual sound surges and triggers an alarm if the noise level exceeds a predefined threshold.



SMART FACE DETECTION

Smart Face Detection can reliably distinguish human faces within the defined area of interest and set off an alarm if indicated.

SOLUTIONS

DARKFIGHTER ALL-AROUND APPLICATIONS



▲ INDUSTRIAL

Large areas of many industrial plants and facilities are only dimly illuminated at night. Their security requirements are particular high, however, since surveillance is frequently needed not only to protect goods, but also to prevent accidents and damage to facilities. Darkfighter is ideally equipped to meet these challenges and provide effective surveillance for industrial facilities.



▲ DEFENCE

Military bases, ammunition and fuel depots, and facilities in remote locations require security at the very highest level, even in total darkness. Darkfighter cameras' superior low-light performance and Smart Features allow them to record crisp, detailed images in any kind of light.



▲ CITY SURVEILLANCE

Most video cameras are equipped to handle the wide range of weather and lighting conditions involved in city surveillance. Municipal authorities can count on Darkfighter to perform reliably under virtually any kind of conditions - no other camera on the market even comes close.



▲ LOGISTICS

Providing security for warehouses and logistics centers poses particular challenges: storage areas, loading and unloading zones, and outside areas are often only sparsely illuminated, and the danger of break-ins is ever present. Unlike conventional cameras, the Darkfighter by Hikvision can easily handle these special requirements.



▲ AIRPORTS

Airports and other transportation hubs require video surveillance to ensure the safety and protection of passengers and employees - day and night, no matter what. No other camera can match Darkfighter's ability to adapt to even the most diverse and changing lighting conditions.



▲ PARKING

Reliable video monitoring is also essential in parking lots and garages, where vehicles are at constant risk of being damaged or stolen. Darkfighter cameras are capable of recording in low-light conditions - in full HD Megapixel resolution.

DS-2CD6026FHWD-(A)

2MP Ultra Low-light Box Network Camera



Key features

- 1/2" progressive scan CMOS
- Full HD1080p video, up to 60fps
- Ultra Low-light
- 120dB WDR
- 3D DNR
- ROI codec
- Audio/Alarm IO
- DarkEye SLA Lens 07-33mm
- Full Smart Feature-set
- (-A) Auto back focus optional

Order Models

DS-2CD6026FHWD
DS-2CD6026FHWD-A
Lens included Model:

HV0733D-6MP



- Up to 6MP resolution
- Focal length: 7-33mm
- Aperture: F0.95-C
- Format: 1/1.8"

HV1140D(P)-8MPIR



- Focal range 11-40mm
- Aperture F1.5-C
- IR correction
- Up to 8MP resolution
- Format 9mm(1/1.8")
- D: DC Iris / P: P-Iris

HV3816D(P)-8MPIR



- Focal range 3.8-16mm
- Aperture F1.5-∞
- IR correction
- Up to 8MP resolution
- Format 9mm(1/1.8")
- D: DC Iris / P: P-Iris

DS-2CD6026FHWD-(A)

Camera	
Image sensor	1/2" Progressive Scan CMOS
Min. illumination	Color: 0.001 Lux @ (F1.2, AGC ON); B/W: 0.0001 Lux @ (F1.2, AGC ON)
Shutter time	1/1 s to 1/100,000 s
Slow Shutter	Support
Lens mount	C/CS mount
Auto-iris	DC drive
Day & night	IR cut filter with auto switch
Digital noise reduction	3D DNR
Wide dynamic range	120dB
Focus	ABF(-A model)
Compression standard	
Video compression	H.264/MPEG4/MJPEG
H.264 Type	Baseline Profile / Main Profile / High Profile
Video Bit Rate	32 Kbps - 16 Mbps
Audio Compression	G.711/G.722.1/G.726/MP2L2
Audio Bit Rate	64Kbps(G.711) / 16Kbps(G.722.1) / 16Kbps(G.726) / 32-128Kbps(MP2L2)
Image	
Max. Resolution	1920 × 1080
Frame rate	WDR OFF: 50Hz: 50fps (1920 × 1080), 50fps (1280 × 960), 50fps (1280 × 720) 60Hz: 60fps (1920 × 1080), 60fps (1280 × 960), 60fps (1280 × 720)
	WDR ON: 50Hz: 25fps (1920 × 1080), 25fps (1280 × 960), 25fps (1280 × 720) 60Hz: 30fps (1920 × 1080), 30fps (1280 × 960), 30fps (1280 × 720)
	Third Stream Independent with Main Stream and Sub Stream, up to 50Hz: 25fps (1920 × 1080); 60Hz: 30fps (1920 × 1080)
BLC	Support, zone optional
Defog	Support
EIS	Support
Image Setting	Saturation, Brightness, Contrast adjustable by client software or web browser
Day/Night Switch	Auto/Schedule/Triggered by Alarm In
ROI	Support
Picture Overlay	LOGO picture can be overlaid on video with 128x128 24bit bmp format
Network	
Network storage	NAS
Protocols	TCP/IP, ICMP, HTTP, HTTPS, FTP, DHCP, DNS, DDNS, RTP, RTSP, RTCP, PPPoE, NTP, UPnP, SMTP, SNMP, IGMP, 802.1X, QoS, IPv6, Bonjour
Security	User Authentication, Watermark, IP address filtering, Anonymous access
Standard	ONVIF, PSIA, CGI, ISAPI
Interface	
Audio Input	1-ch 3.5 mm audio interface, Mic in/Line in. 1 built-in Microphone
Audio Output	1-ch 3.5 mm audio interface
Communication Interface	1 RJ45 10M/100M Ethernet port, 1 RS-485 interface and 1 RS-232 interface
Alarm Input / Output	1 / 1
Video Output	1Vp-p composite output (75 Ω/BNC)
On-board storage	Built-in Micro SD/SDXC slot, up to 64 GB
Reset Button	Yes
General	
Operating conditions	-30 °C - 60 °C (-22 °F - 140 °F), Humidity 95% or less (non-condensing)
Power supply	24 V AC ± 10%, 12 V DC ± 10%, PoE (802.3af)
Power consumption	Max. 6 W (Max. 9W with IR cut filter on)
Dimensions	69.8×58×145 mm (2.68" × 2.56" × 5.70")
Weight	830 g (1.83 lbs)

DS-2CD4626FWD-IZ(H)(S)

2MP Vandal-proof IR Array Bullet Network Camera

Smart IPC



Key Features

- 2MP high resolution
- Full HD1080p video, up to 60fps
- Ultra-low light
- Motorized VF lens with Smart Focus
- 120dB WDR
- Up to 70m IR range
- IP66
- Vandal-proof
- Full Smart Feature-set
- Audio/Alarm IO (-S)
- Built-in heater (-H)

Order Models

- DS-2CD4626FWD-IZ
- DS-2CD4626FWD-IZS
- DS-2CD4626FWD-IZH
- DS-2CD4626FWD-IZHS

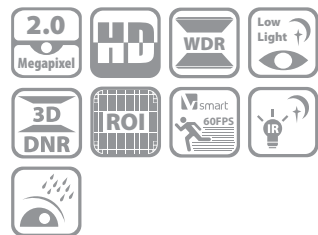
DS-2CD4626FWD-IZ(H)(S)

Camera	
Image sensor	1/2.8" Progressive Scan CMOS
Min. illumination	0.001 Lux @(F1.2,AGC ON), 0 Lux with IR 0.0014 Lux @(F1.4,AGC ON), 0 Lux with IR
Shutter time	1 s to 1/100,000 s
Lens	2.8-12mm @ F1.4, 92°-32°
Lens mount	AF automatic focusing and motorized zoom lens
Auto-iris	DC drive
Day & night	IR cut filter with auto switch
Digital noise reduction	3D DNR
Wide dynamic range	120dB
Compression standard	
Video compression	H.264/MPEG4/MJPEG
H.264 Type	Baseline Profile / Main Profile / High Profile
Video Bit Rate	32 Kbps - 16 Mbps
Audio Compression	G.711/G.722.1/G.726/MP2L2
Audio Bit Rate	64Kbps(G.711) / 16Kbps(G.722.1) / 16Kbps(G.726) / 32-128Kbps(MP2L2)
Image	
Max. Resolution	1920 × 1080
Frame rate	50Hz: 50fps(1920 × 1080) 50fps (1280 × 960), 50fps (1280 × 720) 60Hz: 60fps(1920 × 1080) 60fps (1280 × 960), 60fps (1280 × 720)
Third Stream	Independent with Main Stream and Sub Stream, up to 50Hz: 25fps(1920 × 1080) ; 60Hz: 30fps (1920 × 1080)
BLC	Support, zone optional
Defog	Support
EIS	Support
Day/Night Switch	Auto/Schedule/Triggered by Alarm In
ROI	Support
Picture Overlay	24bit BMP format overlay, zone optional
Network	
Network storage	Micro SD/SDHC/SDXC card with ANR (up to 64G), NAS (Support NFS,SMB/CIFS)
Alarm Trigger	Line crossing Detection, Intrusion detection, scene change detection, audio exception detection, Motion detection, Dynamic analysis, Tampering alarm, Network disconnect, IP address conflict, Storage exception
Protocols	TCP/IP, ICMP, HTTP, HTTPS, FTP, DHCP, DNS, DDNS, RTP, RTSP, RTCP, PPPoE, NTP, UPnP, SMTP, SNMP, IGMP, 802.1X, QoS, IPv6, Bonjour
Security	One-key recovery, flash-prevention, three streams, heartbeat, mirror, password protection, video mask, Watermark, IP address filtering, Anonymous access
Standard	ONVIF, PSIA, CGI, ISAPI
Communication Interface	1 RJ45 10M/100M Ethernet interface
General	
Protection Level	IP66
Impact Protection	IEC60068-275Eh, 20J; EN50102, up to IK10
Operating conditions	-30 °C - 60 °C (-22 °F - 140 °F), Humidity 95% or less (non-condensing) -H: -40 °C - 60 °C
Power supply	24 V AC ± 10%, PoE (802.3at)
IR Distance	Up to 70m
Power consumption	24W MAX
Dimensions	158×338×560mm
Weight	6200g

* "-S" series support 1-ch audio in/out interface, 1-ch alarm in/out interface and 1-ch RS-485 interface

DS-2CD4A26FWD-IZ(H)(S)

2MP IR Array Bullet Network Camera



Key Features

- 2MP high resolution
- Full HD1080p video, up to 60fps
- Ultra-low light
- Motorized VF lens with Smart Focus
- 120dB WDR
- Up to 50m IR range
- IP67
- Full Smart Feature-set
- Audio/Alarm IO (-S)
- Built-in heater (-H)

Order Models

DS-2CD4A26FWD-IZ
 DS-2CD4A26FWD-IZS
 DS-2CD4A26FWD-IZH
 DS-2CD4A26FWD-IZHS

DS-2CD4A26FWD-IZ(H)(S)

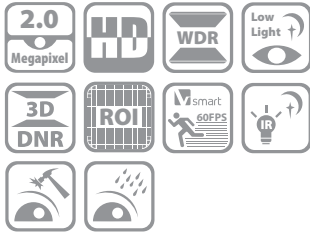
Camera	
Image sensor	1/1.8" Progressive Scan CMOS
Min. illumination	0.002 Lux @(F1.2,AGC ON), 0 Lux with IR
Shutter time	1 s to 1/100,000 s
Lens	2.8-12mm @ F1.4, 92°-32°
Lens mount	AF automatic focusing and motorized zoom lens
Auto-iris	DC drive
Day & night	IR cut filter with auto switch
Digital noise reduction	3D DNR
Wide dynamic range	120dB
Compression standard	
Video compression	H.264 / MJPEG / MPEG 4
H.264 Type	Baseline Profile / Main Profile / High Profile
Video Bit Rate	32 Kbps - 16 Mbps
Audio Compression	G.711/G.722.1/G.726/MP2L2
Audio Bit Rate	64Kbps(G.711) / 16Kbps(G.722.1) / 16Kbps(G.726) / 32-128Kbps(MP2L2)
Image	
Max. Resolution	1920 × 1080
Frame rate	50Hz: 50fps (1920 × 1080)/(1280 × 960)/(1280 × 720) 60Hz: 60fps (1920 × 1080)/(1280 × 960)/(1280 × 720)
Third Stream	Independent with Main Stream and Sub Stream, up to 50Hz: 25fps(1920 × 1080) ; 60Hz: 30fps (1920 × 1080)
BLC	Support, zone optional
Defog	Support
EIS	Support
Day/Night Switch	Auto/Schedule/Triggered by Alarm In
ROI	Support
Picture Overlay	128x128 24bit BMP format overlay, zone optional
Network	
Network storage	Micro SD/SDHC/SDXC card with ANR (up to 64G), NAS (Support NFS,SMB/CIFS)
Alarm Trigger	Line crossing Detection, Intrusion detection, scene change detection, audio exception detection, Motion detection, Dynamic analysis, Tampering alarm, Network disconnect, IP address conflict, Storage exception
Protocols	TCP/IP, ICMP, HTTP, HTTPS, FTP, DHCP, DNS, DDNS, RTP, RTSP, RTCP, PPPoE, NTP, UPnP, SMTP, SNMP, IGMP, 802.1X, QoS, IPv6, Bonjour
Security	One-key recovery, flash-prevention, three streams, heartbeat, mirror, password protection, video mask, Watermark, IP address filtering, Anonymous access
Standard	ONVIF, PSIA, CGI, ISAPI
General	
Protection Level	IP67
Operating conditions	-30 °C - 60 °C (-22 °F - 140 °F), Humidity 95% or less (non-condensing) -H: -40 °C - 60 °C
Power supply	12 V DC ± 10%, PoE (802.3af)
IR Distance	Up to 50m
Power Consumption	12W MAX
Dimensions	100×103.9×311.8 mm
Weight	2000g

* "-S" series support 1-ch audio in/out interface, 1-ch alarm in/out interface and 1-ch RS-485 interface

DS-2CD4526FWD-IZ(H)

2MP Outdoor Dome Network Camera

smart IPC



Key Features

- 2MP high resolution
- Full HD1080p video, up to 60fps
- Ultra-low light
- Motorized VF lens with Smart Focus
- 120dB WDR
- Up to 40m IR range
- IP66
- Vandal-proof
- Full Smart Feature-set
- Audio/Alarm IO
- Built-in heater (-H)

Order Models

DS-2CD4526FWD-IZ
DS-2CD4526FWD-IZH

DS-2CD4526FWD-IZ(H)

Camera	
Image sensor	1/1.8" Progressive Scan CMOS
Min. illumination	0.002 Lux @(F1.2,AGC ON), 0 Lux with IR 0.0002 Lux @(F1.4,AGC ON), 0 Lux with IR
Shutter time	1 s to 1/100,000 s
Lens	2.8-12mm @ F1.4, 92° - 32°
Lens mount	Ø14
Angle Adjustment	Pan:0° - 355°, Tilt: 0° - 75°, Rotation: 0° - 355°
Auto-iris	DC drive
Day & night	IR cut filter with auto switch
Digital noise reduction	3D DNR
Wide dynamic range	120dB
Compression standard	
Video compression	H.264 / MJPEG / MPEG 4
H.264 Type	Baseline Profile / Main Profile / High Profile
Video Bit Rate	32 Kbps - 16 Mbps
Audio Compression	G.711/G.722.1/G.726/MP2L2
Audio Bit Rate	64Kbps(G.711) / 16Kbps(G.722.1) / 16Kbps(G.726) / 32-128Kbps(MP2L2)
Image	
Max. Resolution	1920 × 1080
Frame rate	50Hz: 50fps(1920 × 1080) 50fps (1280 × 960), 50fps (1280 × 720) 60Hz: 60fps(1920 × 1080) 60fps (1280 × 960), 60fps (1280 × 720)
Third Stream	Independent with Main Stream and Sub Stream, up to 50Hz: 25fps(1920 × 1080) ; 60Hz: 30fps (1920 × 1080)
BLC	Support, zone optional
Defog	Support
Day/Night Switch	Auto/Schedule/Triggered by Alarm In
ROI	Support
Picture Overlay	24bit BMP format overlay, zone optional
Network	
Network storage	Micro SD/SDHC/SDXC card with ANR (up to 64G), NAS (Support NFS,SMB/CIFS)
Alarm Trigger	Line crossing detection, Intrusion detection, scene change detection, audio exception detection, Motion detection, Dynamic analysis, Tampering alarm, Network disconnect, IP address conflict, Storage exception
Protocols	TCP/IP, ICMP, HTTP, HTTPS, FTP, DHCP, DNS, DDNS, RTP, RTSP, RTCP, PPPoE, NTP, UPnP, SMTP, SNMP, IGMP, 802.1X, QoS, IPv6, Bonjour
Security	One-key recovery, flash-prevention, three streams, heartbeat, mirror, password protection, video mask, Watermark, IP address filtering, Anonymous access
Standard	ONVIF, PSIA, CGI, ISAPI
Communication Interface	1 RJ45 10M/100M Ethernet interface
Interface	
Audio Input	1-ch 3.5 mm audio interface, Mic in/Line in
Audio Output	1-ch 3.5 mm audio interface
Communication Interface	1 RJ45 10M/100M Ethernet port, 1 RS-485 interface
Alarm Input / Output	1 / 1
Video Output	1Vp-p composite output (75 Ω/BNC)
On-board storage	Built-in Micro SD/SDHC/SDXC slot, up to 64 GB
Reset Button	Yes
General	
Protection Level	IP66
Operating conditions	-30 °C - 60 °C (-22 °F - 140 °F), Humidity 95% or less (non-condensing) -H: -40 °C - 60 °C
Power supply	DC12V / AC 24 V± 10%, PoE (802.3af) -H: DC12V/AC24V/PoE(802.3at)
IR Distance	Up to 40m
Power Consumption	Max: 12W -H: 17W
Dimensions	Ø164.9 × 127 mm(Ø6.49" × 5")
Weight	2100g (4.62 lbs)

DS-2CD4B26FWD-IZ(S)

2MP Ultra-Low Light Smart Bullet Camera



Key Features

- 1/1.8" Progressive Scan CMOS
- Auto-iris
- 1920 × 1080 @ 30fps
- Ultra-low light
- 120dB WDR
- 2 behavior analyses
- IP67
- Smart Codec
- Motorized VF Lens

Order Models

DS-2CD4B26FWD-IZ
DS-2CD4B26FWD-IZS

Accessories



DS-1275ZJ
Vertical Pole Mount



DS-1276ZJ
Corner Mount



DS-1280ZJ-S
Junction Box



DS-1260ZJ
Junction Box

DS-2CD4B26FWD-IZ(S)

Camera	
Image sensor	1/1.8" Progressive Scan CMOS
Min. illumination	Color: 0.002 Lux @ (F1.2, AGC ON), 0.0027 Lux @ (F1.4, AGC ON), 0 Lux with IR B/W: 0.0002 Lux @ (F1.2, AGC ON), 0.00027 Lux @ (F1.4, AGC ON), 0 Lux with IR"
Shutter speed	1 s to 1/100,000 s
Slow Shutter	Support
Lens	2.8 - 12 mm F1.4, horizontal angle of view 90.1° - 31°
Lens mount	Ø14
Auto-iris	DC drive
Day & night	IR cut filter
Digital noise reduction	3D DNR
Wide dynamic range	120dB
3-Axis Adjustment (Bracket)	Pan: 0° - 360°, tilt: 0° - 100°, rotate: 0° - 360°
Compression standard	
Video compression	Main stream: H.264+ / H.264 Sub stream: H.264 / MJPEG Third stream: H.264 / MJPEG
H.264 Type	Baseline Profile / Main Profile / High Profile
Video Bit Rate	32 Kbps - 16 Mbps
Audio Compression	G.711/G.722.1/G.726/MP2L2/PCM
Audio Bit Rate	64Kbps(G.711)/16Kbps(G.722.1)/16Kbps(G.726)/32-192Kbps(MP2L2)
Image	
Max. Resolution	1920 × 1080
Main Stream	50Hz: 25fps (1920 × 1080, 1280 × 960, 1280 × 720) 60Hz: 30fps (1920 × 1080, 1280 × 960, 1280 × 720)
Sub Stream	50Hz: 25fps (704 × 576, 640 × 480, 352 × 288, 320 × 240) 60Hz: 30fps (704 × 480, 640 × 480, 352 × 240, 320 × 240)
Third Stream	50Hz: 25fps (1920 × 1080, 1280 × 960, 1280 × 720, 704 × 576, 640 × 480, 352 × 288, 320 × 240) 60Hz: 30fps (1920 × 1080, 1280 × 960, 1280 × 720, 704 × 480, 640 × 480, 352 × 240, 320 × 240)
Image Enhancement	BLC/HLC/3D DNR/Defog/EIS
Image Setting	Rotate Mode, Saturation, Brightness, Contrast, Sharpness adjustable by client software or web browser
Region of Interest	Support 4 fixed region for each stream
Target Cropping	Support
Day/Night Switch	Auto / Schedule / Triggered by Alarm In
Picture Overlay	LOGO picture can be overlaid on video with 128 × 128 24bit bmp format
Network	
Network storage	Support Micro SD/SDHC/SDXC card (128G), local storage and NAS (NFS,SMB/CIFS), ANR
Alarm Trigger	Intrusion detection, line crossing detection, motion detection, tampering alarm, network disconnected, IP address conflict, illegal login, HDD full, HDD error
Protocols	TCP/IP, ICMP, HTTP, HTTPS, FTP, DHCP, DNS, DDNS, RTP, RTSP, RTCP, PPPoE, NTP, UPnP, SMTp, SNMP, IGMP, 802.1X, QoS, IPv6, UDP, Bonjour
General Function	One-key reset, anti-flicker, three streams, heartbeat, password protection, privacy mask, watermark, IP address filter
Standard	ONVIF (PROFILE S, PROFILE G), PSIA, CGI, ISAPI
General	
Protection Level	IP67
Operating conditions	-30 °C - 60 °C (-22 °F - 140 °F), Humidity 95% or less (non-condensing)
Power supply	12 V DC ± 20%, PoE (802.3at)
IR Distance	10 m to 30 m
Power Consumption	12W MAX
Dimensions	100×103.9×311.8 mm
Weight	2000g

* "-S" with 1 audio input (line in), 1 audio output, 1 RS-485, 1 alarm input and 1 alarm output

DS-2CD4D26FWD-IZ(S)

2MP Ultra Low Light Smart Dome Camera



Key Features

- 1/1.8" Progressive Scan CMOS
- Auto-iris
- 1920 × 1080 @ 30fps
- Ultra-low light
- 120dB WDR
- 2 behavior analyses
- IP66
- Smart Codec
- Motorized VF Lens

Order Models

DS-2CD4D26FWD-IZ
DS-2CD4D26FWD-IZS

Accessories



DS-1271ZJ-DM30
Pendant Mount



DS-1271ZJ-DM32
Pendant Mount



DS-1273ZJ-DM30
Wall Mount



DS-1273ZJ-DM32
Wall Mount

DS-2CD4D26FWD-IZ(H)

Camera	
Image sensor	1/1.8" Progressive Scan CMOS
Min. illumination	Color: 0.002 Lux @ (F1.2, AGC ON), 0.0027 Lux @ (F1.4, AGC ON), 0 Lux with IR B/W: 0.0002 Lux @ (F1.2, AGC ON), 0.00027 Lux @ (F1.4, AGC ON), 0 Lux with IR"
Shutter Speed	1 s to 1/100,000 s
Slow Shutter	Support
Lens	2.8-12 mm F1.4, horizontal angle of view 90.1° - 31°
Lens mount	Ø14
Auto-iris	DC drive
Day & night	IR cut filter
Digital noise reduction	3D DNR
Wide dynamic range	120dB
3-Axis Adjustment	Pan: 0° - 355°, tilt: 0° - 70°, rotate: 0° - 355°
Compression standard	
Video compression	H.264 / MJPEG / MPEG 4
H.264 Type	Baseline Profile / Main Profile / High Profile
Video Bit Rate	32 Kbps - 16 Mbps
Audio Compression	G.711/G.722.1/G.726/MP2L2
Audio Bit Rate	64Kbps(G.711) / 16Kbps(G.722.1) / 16Kbps(G.726) / 32-128Kbps(MP2L2)
Image	
Max. Resolution	1920 × 1080
Main Stream	50Hz: 25fps (1920 × 1080, 1280 × 960, 1280 × 720) 60Hz: 30fps (1920 × 1080, 1280 × 960, 1280 × 720)
Sub Stream	50Hz: 25fps (704 × 576, 640 × 480, 352 × 288, 320 × 240) 60Hz: 30fps (704 × 480, 640 × 480, 352 × 240, 320 × 240)
Third Stream	50Hz: 25fps (1920 × 1080, 1280 × 960, 1280 × 720, 704 × 576, 640 × 480, 352 × 288, 320 × 240) 60Hz: 30fps (1920 × 1080, 1280 × 960, 1280 × 720, 704 × 480, 640 × 480, 352 × 240, 320 × 240)
Image Enhancement	BLC/HLC/3D DNR/Defog/EIS
Image Setting	Rotate Mode, Saturation, Brightness, Contrast, Sharpness adjustable by client software or web browser
Target Cropping	Support
Day/Night Switch	Auto/Schedule/Triggered by Alarm In
Picture Overlay	LOGO picture can be overlaid on video with 128 × 128 24bit bmp format
Network	
Network storage	Support Micro SD/SDHC/SDXC card (128G), local storage and NAS (NFS,SMB/CIFS), ANR
Alarm Trigger	Intrusion detection, line crossing detection, motion detection, tampering alarm, network disconnected, IP address conflict, illegal login, HDD full, HDD error
Protocols	TCP/IP, ICMP, HTTP, HTTPS, FTP, DHCP, DNS, DDNS, RTP, RTSP, RTCP, PPPoE, NTP, UPnP, SMTP, SNMP, IGMP, 802.1X, QoS, IPv6, UDP, Bonjour
General Function	One-key reset, anti-flicker, three streams, heartbeat, password protection, privacy mask, watermark, IP address filter
Standard	ONVIF (PROFILE S, PROFILE G), PSIA, CGI, ISAPI
Interface	
Audio	With-S model: 1 input (line in), 1 output
Audio Output	1-ch 3.5 mm audio interface
Communication Interface	1 RJ45 10M/100M Ethernet port, with -S model: 1 RS-485 interface
Alarm	With-S model: 2 inputs, 2 outputs (up to DC24V 1A or AC110V 500mA)
Video Output	1Vp-p composite output (75 Ω/BNC)
On-board storage	Built-in Micro SD/SDHC/SDXC slot, up to 128 GB
Reset Button	Yes
General	
Protection Level	IP66
Operating conditions	-30 °C - 60 °C (-22 °F - 140 °F), Humidity 95% or less (non-condensing)
Power supply	12 V DC ± 20%, PoE (802.3af)
Power Interface	Terminal block for DC input
Current	Max. 833 mA
Power Consumption	Max: 12W -H: 17W
Dimensions	Ø145.96×133.5 mm (Ø5.75" × 5.26")
Weight	1200g (2.65 lbs)

* "-S" with 1 audio input (line in), 1 audio output, 1 RS-485, 2 alarm inputs and 2 alarm outputs

DS-2CD4026FWD (-A)(P)

2 MP Ultra Low-light Box Network Camera



Key Features

- 1/2" progressive scan CMOS
- Full HD1080p video, up to 60fps
- Ultra Low-light
- 120dB WDR
- 3D DNR
- ROI codec
- Audio/Alarm IO
- DarkEye SLA Lens 07-33mm
- Full Smart Feature-set
- (-A) Auto back focus optional

Order Models

DS-2CD4026FHWD
 DS-2CD4026FHWD-A
 DS-2CD4026FHWD-AP
Lens included Model:

HV0733D-6MP



- Up to 6MP resolution
- Focal length: 7-33mm
- Aperture: F0.95-C
- Format: 1/1.8"

HV1140D(P)-8MPIR



- Focal range 11-40mm
- Aperture F1.5-C
- IR correction
- Up to 8MP resolution
- Format 9mm(1/1.8")
- D: DC Iris / P: P-Iris

HV3816D(P)-8MPIR



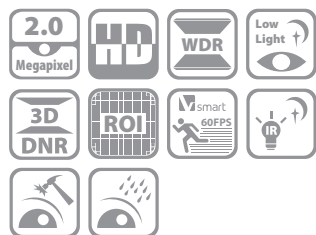
- Focal range 3.8-16mm
- Aperture F1.5-∞
- IR correction
- Up to 8MP resolution
- Format 9mm(1/1.8")
- D: DC Iris / P: P-Iris

DS-2CD4026FWD (-A)(P)

Camera	
Image sensor	1/2" Progressive Scan CMOS
Min. illumination	Color: 0.002 Lux @ (F1.2, AGC ON); B/W: 0.0002 Lux @ (F1.2, AGC ON)
Shutter time	1/1 s to 1/100,000 s
Slow Shutter	Support
Lens mount	C/CS mount
Auto-iris	DC drive
Day & night	IR cut filter with auto switch
Digital noise reduction	3D DNR
Wide dynamic range	120dB
Focus	ABF(-A model)
Compression standard	
Video compression	H.264/MPEG4/MJPEG
H.264 Type	Baseline Profile / Main Profile / High Profile
Video Bit Rate	32 Kbps - 16 Mbps
Audio Compression	G.711/G.726/MP2L2
Audio Bit Rate	64Kbps(G.711) / 16Kbps(G.726)/ 32-128Kbps(MP2L2)
Image	
Max. Resolution	1920 × 1080
Frame rate	WDR OFF: 50Hz: 50fps (1920 × 1080), 50fps (1280 × 960), 50fps (1280 × 720) 60Hz: 60fps (1920 × 1080), 60fps (1280 × 960), 60fps (1280 × 720)
	WDR ON: 50Hz: 25fps (1920 × 1080), 25fps (1280 × 960), 25fps (1280 × 720) 60Hz: 30fps (1920 × 1080), 30fps (1280 × 960), 30fps (1280 × 720)
	Third Stream Independent with Main Stream and Sub Stream, up to 50Hz: 25fps (1920 × 1080); 60Hz: 30fps (1920 × 1080)
BLC	Support, zone optional
Defog	Support
EIS	Support
Image Setting	Saturation, Brightness, Contrast adjustable by client software or web browser
Day/Night Switch	Auto/Schedule/Triggered by Alarm In
ROI	Support
Picture Overlay	LOGO picture can be overlaid on video with 128x128 24bit bmp format
Network	
Network storage	NAS
Protocols	TCP/IP, ICMP, HTTP, HTTPS, FTP, DHCP, DNS, DDNS, RTP, RTSP, RTCP, PPPoE, NTP, UPnP, SMTP, SNMP, IGMP, 802.1X, QoS, IPv6, Bonjour
Security	User Authentication, Watermark, IP address filtering, Anonymous access
Standard	ONVIF, PSIA, CGI, ISAPI
Interface	
Audio Input	1-ch 3.5 mm audio interface, Mic in/Line in. 1 built-in Microphone
Audio Output	1-ch 3.5 mm audio interface
Communication Interface	1 RJ45 10M/100M Ethernet port, 1 RS-485 interface and 1 RS-232 interface
Alarm Input / Output	1 / 1
Video Output	1Vp-p composite output (75 Ω/BNC)
On-board storage	Built-in Micro SD/SDXC slot, up to 64 GB
Reset Button	Yes
General	
Operating conditions	-30 °C - 60 °C [-22 °F - 140 °F], Humidity 95% or less (non-condensing)
Power supply	24 V AC ± 10%, 12 V DC ± 10%, PoE (802.3af)
Power consumption	Max. 6 W (Max. 9W with IR cut filter on)
Dimensions	69.8×58×145 mm (2.68" × 2.56" × 5.70")
Weight	830 g (1.83 lbs)

DS-2CD4126FWD-IZ

2MP Outdoor Dome Network Camera



Key Features

- 2MP high resolution
- Full HD1080p video, up to 60fps
- Ultra-low light
- Motorized VF lens with Smart Focus
- 120dB WDR
- Up to 30m IR range
- Vandal-proof
- Audio/Alarm IO
- Full Smart Feature-set

Order Models

DS-2CD4126FWD-IZ

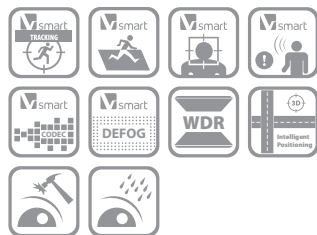
DS-2CD4126FWD-IZ

Camera	
Image sensor	1/2.8" Progressive Scan CMOS
Min. illumination	0.002 Lux @ (F1.2, AGC ON), 0 lux with IR 0.0027 Lux @ (F1.4, AGC ON), 0 lux with IR
Shutter time	1 s to 1/100,000 s
Slow Shutter	Support
Lens	2.8-12mm @ F1.4, angle of view: 92°~ 32°
Lens mount	Ø14
Angle Adjustment	Pan:0° - 355°, Tilt: 0° - 75°, Rotation: 0° - 355°
Auto-iris	DC drive
Day & night	Electronic (-): IR cut filter with auto switch)
Digital noise reduction	3D DNR
Wide dynamic range	120dB
Compression standard	
Video compression	H.264 / MJPEG / MPEG 4
H.264 Type	Baseline Profile / Main Profile / High Profile
Video Bit Rate	32 Kbps - 16 Mbps
Audio Compression	G.711/G.722.1/G.726/MP2L2
Audio Bit Rate	64Kbps(G.711) / 16Kbps(G.722.1) / 16Kbps(G.726) / 32-128Kbps(MP2L2)
Image	
Max. Resolution	1920 × 1080
Frame rate	50Hz: 50fps(1920 × 1080, 1280 × 960, 1280 × 720) 60Hz: 60fps (1920 × 1080, 1280 × 960, 1280 × 720)
Third Stream	Independent with Main Stream and Sub Stream, up to 50Hz: 25fps(1920 × 1080) ; 60Hz: 30fps (1920 × 1080)
BLC	Support
HLC	Support
Smart Defog	Support
EIS	Support
Image Setting	Rotate mode, Saturation, Brightness, Contrast adjustable by client software or web browser
Day/Night Switch	Auto/Schedule/Triggered by Alarm In
ROI	Support
Picture Overlay	LOGO picture can be overlaid on video with 128x128 24bit bmp format
Network	
Network storage	NAS (Support NFS,SMB/CIFS)
Alarm Trigger	Intrusion detection, Defocus detection, Motion detection, Face detection, Dynamic analysis, Tampering alarm, Network disconnect, IP address conflict, Storage exception
Protocols	TCP/IP, ICMP, HTTP, HTTPS, FTP, DHCP, DNS, DDNS, RTP, RTSP, RTCP, PPPoE, NTP, UPnP, SMTP, SNMP, IGMP, 802.1X, QoS, IPv6, Bonjour
Security	User Authentication, Watermark, IP address filtering, Anonymous access
Standard	ONVIF, PSIA, CGI, ISAPI
Interface	
Audio Input	1-ch 3.5 mm audio interface, Mic in/Line in
Audio Output	1-ch 3.5 mm audio interface
Communication Interface	1 RJ45 10M/100M Ethernet port, 1 RS-485 interface
Alarm Input / Output	1 / 1
Video Output	1Vp-p composite output (75 Ω/BNC)
On-board storage	Built-in Micro SD/SDXC slot, up to 64 GB
Reset Button	Yes
General	
Operating conditions	-30 °C - 60 °C (-22 °F - 140 °F), Humidity 95% or less (non-condensing)
Power supply	12 V DC ± 10%, PoE (802.3af)
Power Consumption	13.5W MAX
IR Range	Up to 30m
Impact Protection	IEC60068-275Eh, 50J; EN50102, up to IK10
Dimensions	Ø 140 × 121.8 mm (Ø 5.51" × 4.80")
Weight	1400 g (3.09 lbs)

* "-Z" is equipped with Motorized VF lens

DS-2DF82231-AEL

2 MP Ultra Low-light Box Network Camera



Key Features

- 1/1.9" HD CMOS sensor
- 1920*1080 Full HD,
- 23X Optical Zoom
- Ultra-low illumination
- 120dB True WDR
- Smart Tracking
- Smart Detection
- EIS (Electronic Image Stabilization)
- Defog
- 200m IR distance
- Hi-PoE / 24VAC power supply
- Vandal proof (IK10)

Order Models

DS-2DF82231-AEL
24VAC, low temperature, outdoor

Accessories



DS-1602ZJ
Long-arm Wall
Mount Bracket

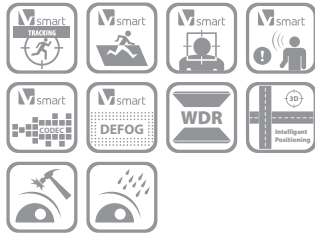
DS-2DF82231-AEL

Camera Module	
Image sensor	1/1.9" Progressive Scan CMOS
Min. illumination	F1.5, 1/1 sec, 50 IRE, AGC On: Color: 0.002 lux, B/W : 0.0002 lux, 0 lux with IR F1.5, 1/30 sec, 50 IRE, AGC On: Color:0.02 lux, B/W : 0.002 lux, 0 lux with IR
Max. Image Resolution	1920×1080
Focal Length	5.9-135.7mm, 23x
Digital Zoom	16X
Zoom Speed	Approx.4.4s(Optical Wide-Tele)
Angle of View	59.8-3.0 degree [Wide-Tele]
Min. Working Distance	10-1500mm(Wide-Tele)
Aperture Range	F1.5-F3.4
Focus Mode	Auto / Semiautomatic / Manual
WDR	120dB
S / N Ratio	≥ 55dB
Shutter Time	50Hz: 1-1/30,000s; 60Hz: 1-1/30,000s
AGC	Auto / Manual
White Balance	Auto / Manual /ATW/Indoor/Outdoor/Daylight lamp/Sodium lamp
Day & Night	IR Cut Filter
Privacy Mask	24 privacy masks programmable; optional multiple colors and mosaics
Enhancement	3D DNR, EIS, Defog, HLC/BLC, SVC
Pan and Tilt	
Range	Pan:360° endless; Tilt: -20°-90°(Auto Flip)
Speed	Pan Manual Speed: 0.1°-160°/s, Pan Preset Speed: 240°/s Tilt Manual Speed: 0.1°-120°/s, Tilt Preset Speed: 200°/s
Number of Preset	300
Patrol	8 patrols, up to 32 presets per patrol
Pattern	4 patterns, with the recording time not less than 10 minutes per pattern
Park Action	Preset / Patrol / Pattern / Auto scan / Tilt scan / Random scan / Frame scan / Panorama scan
Scheduled Task	Preset / Patrol / Pattern / Auto scan / Tilt scan / Random scan / Frame scan / Panorama scan/Dome reboot/Dome adjust/Aux output
Smart features	
Smart tracking	Manual/ Panorama/ Intrusion trigger/ Line crossing trigger/ Region entrance trigger/ Region exiting trigger. Smart tracking when patrol between multiple scenarios.
Smart detection	Face detection, intrusion detection, line crossing detection, audio exception detection, region entrance, region exiting
ROI encoding	Support 24 areas with adjustable levels
Infrared	
IR Distance	Up to 200m
IR Intensity	Automatically adjusted, depending on the zoom ratio
Input/ Output	
Monitor Output	1.0V(p-p) / 75Ω, NTSC (or PAL) composite, BNC
Audio Input	1 Mic in/Line in interface, line input: 2-2.4V(p-p); output impedance: 1KΩ, ±10%
Audio Output	1 Audio output interface, line level, impedance: 600Ω
Alarm	
Alarm I/O	7/2
Alarm Trigger	Face detection, Intrusion detection, Line crossing detection, Region entrance, Region exiting, Audio exception detection, Motion detection, Audio Exception Detection, Dynamic analysis, Tampering alarm, Network disconnect, IP address conflict, Storage exception
Alarm Action	Preset, Patrol, Pattern, Micro SD/SDHC card recording, Relay output, Notification on Client
Network	
Ethernet	10Base-T / 100Base-TX, RJ45 connector
Main Stream	50Hz: 25fps(1920×1080, 1280×960, 1280×720); 60Hz: 30fps(1920×1080, 1280×960, 1280×720)
Sub Stream	50Hz: 25fps(704×576, 352×288, 176×144); 60Hz: 30fps(704×480, 352×240, 176×120)
Third Stream	50Hz: 25fps(1920×1080, 1280×960, 1280×720, 704×576, 352×288, 176×144) 60Hz: 30fps(1920×1080, 1280×960, 1280×720, 704×480, 352×240, 176×120)
Image Compression	H.264/MJPEG/MPEG4, H.264 encoding with Baseline/Main/High profile
Audio Compression	G.711ulaw/G.711alaw/G.726/MP2L2/G.722
Protocols	IPv4/IPv6, HTTP, HTTPS, 802.1X, QoS, FTP, SMTP, UPnP, SNMP, DNS, DDNS, NTP, RTSP, RTP, TCP, UDP, IGMP, ICMP, DHCP, PPPoE
Simultaneous Live View	Up to 20 users
Mini SD Memory Card	Support up to 64GB Micro SD/SDHC/SDXC card. Support Edge recording
User/Host Level	Up to 32 users,3 Levels: Administrator, Operator and User
Security Measures	User authentication (ID and PW); Host authentication (MAC address); IP address filtering
System Integration	
Application programming	Open-ended API, support ONVIF, PSIA and CGI, Genetec
Web Browser	IE 7+, Chrome 18+, Firefox 5.0+, Safari 5.02+, support multi-language
RS-485 Protocols	HIKVISION, Pelco-P, Pelco-D, self-adaptive
Power	Hi-PoES24 VAC, Max.60W
Working Temperature	-40°C ~ 65°C (-40°F ~ 149°F)
Humidity	90% or less
Protection Level	IP66, IK10, TVS 6,000V lightning protection, surge protection and voltage transient protection
Certification	FCC, CE, UL, RoHS, IEC/EN 61000, IEC/EN 55022, IEC/EN 55024, IEC /EN60950-1
Dimensions	Φ266.6(mm)×365.2(mm)
Weight (approx.)	8kg (approx.)
Mount Option	Long-arm wall mount: DS-1602ZJ; Corner mount: DS-1602ZJ-corner; Pole Mount: DS-1602ZJ-pole; Power box mount:DS-1602ZJ-box

DS-2DF6223-AEL

2MP 23X Network PTZ Dome Camera

smart IPC



Key Features

- 1/1.9" HD CMOS sensor
- 1920*1080 Full HD,
- 23X Optical Zoom
- Ultra-low illumination
- 120dB True WDR
- Smart Tracking
- Smart Detection
- EIS (Electronic Image Stabilization)
- Defog
- Hi-PoE / 24VAC power supply
- Vandal proof (IK10)

Order Models

DS-2DF6223-AEL
24VAC, low temperature, outdoor

Accessories



DS-1602ZJ
Long-arm Wall
Mount Bracket

DS-2DF6223-AEL

Camera	
Image sensor	1/1.9" Progressive Scan CMOS
Min. illumination	F1.5, 1/1 sec, 50 IRE, AGC On: Color: 0.002 lux, B/W: 0.0002 lux F1.5, 1/30 sec, 50 IRE, AGC On: Color: 0.02 lux, B/W : 0.002 lux
Max. Image Resolution	1920×1080
Focal Length	5.9-135.7mm, 23x
Digital Zoom	16X
Zoom Speed	Approx.4.4s(Optical Wide-Tele)
Angle of View	59.8-3.0 degree (Wide-Tele)
Min. Working Distance	10-1500mm(Wide-Tele)
Aperture Range	F1.5-F3.4
Focus Mode	Auto / Semiautomatic / Manual
WDR	120dB
S / N Ratio	≥ 55dB
Shutter Time	50Hz: 1-1/30,000s; 60Hz: 1-1/30,000s
AGC	Auto / Manual
White Balance	Auto / Manual /ATW/Indoor/Outdoor/Daylight lamp/Sodium lamp
Day & Night	IR Cut Filter
Privacy Mask	24 privacy masks programmable; optional multiple colors and mosaics
Enhancement	3D DNR, EIS, Defog, HLC/BLC, SVC
Pan and Tilt	
Range	Pan:360° endless; Tilt: -20°~90°(Auto Flip)
Speed	Pan Manual Speed: 0.1°-300°/s, Pan Preset Speed: 540°/s Tilt Manual Speed: 0.1°-240°/s, Tilt Preset Speed: 400°/s
Number of Preset	300
Patrol	8 patrols, up to 32 presets per patrol
Pattern	4 patterns, with the recording time not less than 10 minutes per pattern
Park Action	Preset / Patrol / Pattern / Auto scan / Tilt scan / Random scan / Frame scan / Panorama scan
Scheduled Task	Preset / Patrol / Pattern / Auto scan / Tilt scan / Random scan / Frame scan / Panorama scan/ Dome reboot/Dome adjust/Aux output
Smart features	
Smart tracking	Manual/ Panorama/ Intrusion trigger/ Line crossing trigger/ Region entrance trigger/ Region exiting trigger
Smart detection	Face detection, intrusion detection, line crossing detection, audio exception detection, region entrance, region exiting
ROI encoding	Support 24 areas with adjustable levels
Input/ Output	
Monitor Output	1.0V[p-p] / 75Ω, NTSC (or PAL) composite, BNC
Audio Input	1 Mic in/Line in interface, line input: 2-2.4V[p-p]; output impedance: 1KΩ, ±10%
Audio Output	1 Audio output interface, line level, impedance: 600Ω
Alarm	
Alarm I/O	7/2
Alarm Trigger	Face detection, Intrusion detection, Line crossing detection, Region entrance, Region exiting, Audio exception detection, Motion detection, Line Exception Detection, Dynamic analysis, Tampering alarm, Network disconnect, IP address conflict, Storage exception
Alarm Action	Preset, Patrol, Pattern, Micro SD/SDHC card recording, Relay output, Notification on Client
Network	
Ethernet	10Base-T / 100Base-TX, RJ45 connector
Main Stream	50Hz: 25fps(1920×1080, 1280×960, 1280×720); 60Hz: 30fps(1920×1080, 1280×960, 1280×720)
Sub Stream	50Hz: 25fps(704×576, 352×288, 176×144); 60Hz: 30fps(704×480, 352×240, 176×120)
Third Stream	50Hz: 25fps(1920×1080, 1280×960, 1280×720, 704×576, 352×288, 176×144) 60Hz: 30fps(1920×1080, 1280×960, 1280×720, 704×480, 352×240, 176×120)
Image Compression	H.264/MJPEG/MPEG4, H.264 encoding with Baseline/Main/High profile
Audio Compression	G.711ulaw/G.711alaw/G.726/MP2L2/G.722
Protocols	IPv4/IPv6, HTTP, HTTPS, 802.1X, QoS, FTP, SMTP, UPnP, SNMP, DNS, DDNS, NTP, RTSP, RTP, TCP, UDP, IGMP, ICMP, DHCP, PPPoE
Simultaneous Live View	Up to 20 users
Mini SD Memory Card	Support up to 64GB Micro SD/SDHC/SDXC card. Support Edge recording
User/Host Level	Up to 32 users,3 Levels: Administrator, Operator and User
Security Measures	User authentication (ID and PW); Host authentication (MAC address); IP address filtering
System Integration	
Application programming	Open-ended API, support ONVIF, PSIA and CGI, Genetec
Web Browser	IE 7+, Chrome 18 +, Firefox 5.0 +, Safari 5.02 +, support multi-language
RS-485 Protocols	HIKVISION, Pelco-P, Pelco-D, self-adaptive
Power	Hi-PoES24 VAC, Max.60W
Working Temperature	-40°C - 65°C (-40°F - 149°F)
Humidity	90% or less
Protection Level	IP66, IK10, TVS 4,000V lightning protection, surge protection and voltage transient protection
Certification	FCC, CE, UL, RoHS, IEC/EN 61000, IEC/EN 55022, IEC/EN 55024, IEC /EN60950-1
Dimensions	Φ178.3(mm)×331.0(mm) [Φ7.02"×13.03"]
Weight (approx.)	8kg (approx.)
Mount Option	Long-arm wall mount: DS-1602ZJ; Corner mount: DS-1602ZJ-corner; Pole Mount: DS-1602ZJ-pole; Power box mount:DS-1602ZJ-box

DS-2CD4B26FWD-IZ(S)

2.0 MP Ultra-Low Light Smart Bullet Camera



Key Features

- 1/1.8" Progressive Scan CMOS
- Auto-iris
- 1920 × 1080 @ 30fps
- Ultra-low light
- 120dB WDR
- 2 behavior analyses
- IP67

Order Models

DS-2CD4B26FWD-IZ; DS-2CD4B26FWD-IZS
 *-S: with 1 audio input (line in), 1 audio output,
 1 RS-485, 1 alarm input and 1 alarm output

Accessories



DS-1275ZJ
Vertical Pole Mount



DS-1276ZJ
Corner Mount



DS-1280ZJ-S
Junction Box



DS-1260ZJ
Junction Box

DS-2CD4B26FWD-IZ(S)

Camera Module	
Image Sensor	1/1.8" Progressive Scan CMOS
Min. Illumination	Color: 0.002 Lux @ (F1.2, AGC ON), 0.0027 Lux @ (F1.4, AGC ON), 0 Lux with IR B/W: 0.0002 Lux @ (F1.2, AGC ON), 0.00027 Lux @ (F1.4, AGC ON), 0 Lux with IR*
Shutter Speed	1 s - 1/100,000 s
Slow Shutter	Support
Lens	2.8 - 12 mm F1.4, horizontal angle of view 90.1° - 31°
Lens Mount	Ø14
Auto-iris	DC drive
Day & Night	IR Cut Filter
Digital Noise Reduction	3D DNR
WDR	120dB
3-Axis Adjustment (Bracket)	Pan: 0° - 360°, tilt: 0° - 100°, rotate: 0° - 360°
Compression Standard	
Video Compression	Main stream: H.264+/H.264 Sub stream: H.264/MJPEG Third stream: H.264/MJPEG
H.264 Type	Baseline Profile/Main Profile/High Profile
Video Bit Rate	32 Kbps - 16 Mbps
Audio Compression	G.711/G.722.1/G.726/MP2L2/PCM
Audio Bit Rate	64Kbps(G.711)/16Kbps(G.722.1)/16Kbps(G.726)/32-192Kbps(MP2L2)
Image	
Max. Resolution	1920 × 1080
Main Stream	50Hz: 25fps (1920 × 1080, 1280 × 960, 1280 × 720) 60Hz: 30fps (1920 × 1080, 1280 × 960, 1280 × 720)
Sub Stream	50Hz: 25fps (704 × 576, 640 × 480, 352 × 288, 320 × 240) 60Hz: 30fps (704 × 480, 640 × 480, 352 × 240, 320 × 240)
Third Stream	50Hz: 25fps (1920 × 1080, 1280 × 960, 1280 × 720, 704 × 576, 640 × 480, 352 × 288, 320 × 240) 60Hz: 30fps (1920 × 1080, 1280 × 960, 1280 × 720, 704 × 480, 640 × 480, 352 × 240, 320 × 240)
Image Enhancement	BLC/HLC/3D DNR/Defog/EIS
Image Setting	Rotate Mode, Saturation, Brightness, Contrast, Sharpness adjustable by client software or web browser
Region of Interest	Support 4 fixed region for each stream
Target Cropping	Support
Day/Night Switch	Auto/Schedule/Triggered by Alarm In
Picture Overlay	LOGO picture can be overlaid on video with 128 × 128 24bit bmp format
Network	
Network Storage	Support Micro SD/SDHC/SDXC card (128G), local storage and NAS (NFS,SMB/CIFS), ANR
Alarm Trigger	Intrusion detection, line crossing detection, motion detection, tampering alarm, network disconnected, IP address conflict, illegal login, HDD full, HDD error
Protocols	TCP/IP, ICMP, HTTP, HTTPS, FTP, DHCP, DNS, DDNS, RTP, RTSP, RTCP, PPPoE, NTP, UPnP, SMTP, SNMP, IGMP, 802.1X, QoS, IPv6, UDP, Bonjour
General Function	One-key reset, anti-flicker, three streams, heartbeat, password protection, privacy mask, watermark, IP address filter
Standard	ONVIF (PROFILE S, PROFILE G), PSIA, CGI, ISAPI
Interface	
Audio	With -S model: 1 input (line in), 1 output
Communication Interface	1 RJ45 10M/100M Ethernet port; with -S model: 1 RS-485 interface
Alarm	With -S model: 1 input, 1 output (up to DC24V 1A or AC110V 500mA)
Video Output	1Vp-p composite output (75 Ω/BNC)
On-board storage	Built-in Micro SD/SDHC/SDXC slot, up to 128 GB
Reset Button	Yes
Audio	
Environment Noise Filtering	Support
Audio I/O	Support
Audio Sampling Rate	Max. 48 kHz
Smart Feature-set	
Line Crossing Detection	Cross a pre-defined virtual line, up to 4 pre-defined virtual lines supported
Intrusion Detection	Enter and loiter in a pre-defined virtual region, up to 4 pre-defined virtual regions supported
General	
Operating Conditions	-30 °C - 60 °C (-22 °F - 140 °F), Humidity 95% or less (non-condensing)
Power Supply	12 V DC ± 20%, PoE (802.3at)
Power Consumption and Current	12 V DC ± 20%: Max. 11.25 W/0.94 A PoE (802.3at): Max. 15 W/0.31 A
IR Range	10 m to 30 m
Protection Level	IP67
Dimensions	311.8 × 103.9 × 100 mm (12.3" × 4.1" × 3.9")
Weight	2000 g (4.41 lbs)

DS-2CD4D26FWD-IZ(S)

2.0 MP Ultra Low Light Smart Dome Camera



Key Features

- 1/1.8" Progressive Scan CMOS
- Auto-iris
- 1920 × 1080 @ 30fps
- Ultra-low light
- 120dB WDR
- 2 behavior analyses
- IP66

Order Models

DS-2DF6223-AEL
24VAC, low temperature, outdoor

Accessories



DS-1271ZJ-DM30
Pendant Mount



DS-1271ZJ-DM32
Pendant Mount



DS-1273ZJ-DM30
Wall Mount



DS-1273ZJ-DM32
Wall Mount

DS-2CD4D26FWD-IZ(S)

Camera	
Image Sensor	1/1.8" Progressive Scan CMOS
Min. Illumination	Color: 0.002 Lux @ (F1.2, AGC ON), 0.0027 Lux @ (F1.4, AGC ON), 0 Lux with IR B/W: 0.0002 Lux @ (F1.2, AGC ON), 0.00027 Lux @ (F1.4, AGC ON), 0 Lux with IR*
Shutter Speed	1 s - 1/100,000 s
Slow Shutter	Support
Lens	2.8 - 12 mm F1.4, horizontal angle of view 90.1° - 31°
Lens Mount	Ø14
Auto-iris	DC drive
Day & Night	IR Cut Filter
Digital Noise Reduction	3D DNR
WDR	120dB
3-Axis Adjustment	Pan: 0° - 355°, tilt: 0° - 70°, rotate: 0° - 355°
Compression Standard	
Video Compression	Main stream: H.264+/H.264 Sub stream: H.264/MJPEG Third stream: H.264/MJPEG
H.264 Type	Baseline Profile/Main Profile/High Profile
Video Bit Rate	32 Kbps - 16 Mbps
Audio Compression	G.711/G.722.1/G.726/MP2L2/PCM
Audio Bit Rate	64Kbps[G.711]/16Kbps[G.722.1]/16Kbps[G.726]/32-192Kbps[MP2L2]
Image	
Max. Resolution	1920 × 1080
Main Stream	50Hz: 25fps (1920 × 1080, 1280 × 960, 1280 × 720) 60Hz: 30fps (1920 × 1080, 1280 × 960, 1280 × 720)
Sub Stream	50Hz: 25fps (704 × 576, 640 × 480, 352 × 288, 320 × 240) 60Hz: 30fps (704 × 480, 640 × 480, 352 × 240, 320 × 240)
Third Stream	50Hz: 25fps (1920 × 1080, 1280 × 960, 1280 × 720, 704 × 576, 640 × 480, 352 × 288, 320 × 240) 60Hz: 30fps (1920 × 1080, 1280 × 960, 1280 × 720, 704 × 480, 640 × 480, 352 × 240, 320 × 240)
Image Enhancement	BLC/HLC/3D DNR/Defog/EIS
Image Setting	Rotate Mode, Saturation, Brightness, Contrast, Sharpness adjustable by client software or web browser
Region of Interest	Support 4 fixed region for each stream
Target Cropping	Support
Day/Night Switch	Auto/Schedule/Triggered by Alarm In
Picture Overlay	LOGO picture can be overlaid on video with 128 × 128 24bit bmp format
Network	
Network Storage	Support Micro SD/SDHC/SDXC card (128G), local storage and NAS (NFS,SMB/CIFS), ANR
Alarm Trigger	Intrusion detection, line crossing detection, motion detection, tampering alarm, network disconnected, IP address conflict, illegal login, HDD full, HDD error
Protocols	TCP/IP, ICMP, HTTP, HTTPS, FTP, DHCP, DNS, DDNS, RTP, RTSP, RTCP, PPPoE, NTP, UPnP, SMTP, SNMP, IGMP, 802.1X, QoS, IPv6, UDP, Bonjour
General Function	One-key reset, anti-flicker, three streams, heartbeat, password protection, privacy mask, watermark, IP address filter
Standard	ONVIF (PROFILE S, PROFILE G), PSIA, CGI, ISAPI
Interface	
Audio	With -S model: 1 input (line in), 1 output
Communication Interface	1 RJ45 10M/100M Ethernet port, with -S model: 1 RS-485 interface
Alarm	With -S model: 2 inputs, 2 outputs (up to DC24V 1A or AC110V 500mA)
Video Output	1Vp-p composite output (75 Ω/BNC)
On-board storage	Built-in Micro SD/SDHC/SDXC slot, up to 128 GB
Reset Button	Yes
Audio	
Environment Noise Filtering	Support
Audio I/O	Support
Audio Sampling Rate	Max. 48 kHz
Smart Feature-set	
Line Crossing Detection	Cross a pre-defined virtual line, up to 4 pre-defined virtual lines supported
Intrusion Detection	Enter and loiter in a pre-defined virtual region, up to 4 pre-defined virtual regions supported
General	
Operating Conditions	-30 °C ~ 60 °C (-22 °F ~ 140 °F), Humidity 95% or less (non-condensing)
Power Supply	12 V DC ± 20%, PoE (802.3af)
Power Interface	Terminal block for DC input
Current	Max. 833 mA
Power Consumption	Max. 8 W
IR Range	10 m to 30 m
Protection Level	IP66
Dimensions	Ø145.96 × 133.5 mm (Ø5.75" × 5.26")
Weight	1200 g (2.65 lbs)

DARKFIGHTER
ULTRA LOW-LIGHT CAMERAS



You can rely on Hikvision video surveillance products to meet your security needs.
Our professional partners will be happy to provide you with any information you need.

Distributed by:



HIKVISION